

Safety Alert



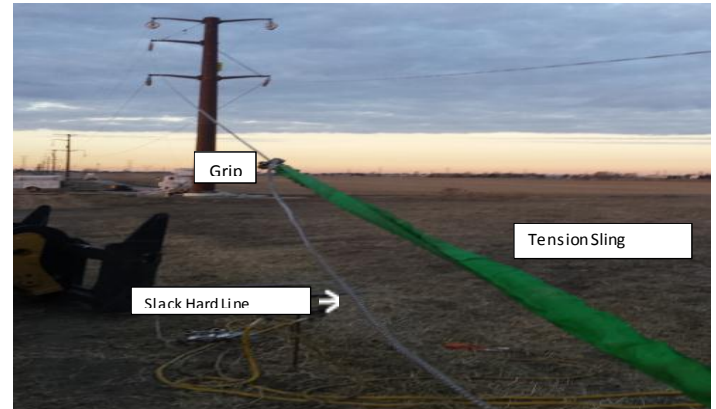
GREEN

EFFECTIVE Date: October 23, 2015

CE-SA-1711

OHT Crew Leader Injured During Wire Pulling Process

On Thursday, October 22 at approximately 1615, in South region, an Overhead Transmission Crew Leader (CL) was injured when a grip slipped during the pulling process of installing new conductors. The force from the tension caused a violent motion causing our employee to flip and land on his head. The crew members came to the aid of the CL and called 911. The paramedics arrived at the job site and transported the employee via ambulance to the hospital for treatment and further evaluation. An investigation is in progress to understand how we can learn from this serious incident to avoid a similar event in the future.



The crew assignment was to remove the existing conductor utilizing a "V Groove" pulling machine. The old conductor was connected to the puller tensioner hard line (rope). The hard line had been pulled in, and was secured with a grip and sling, which were connected to the back of the "V Groove" machine. The CL then grasped the slack side of the hard line to pull the hardline / kelum swivel assembly to the back of the "V" Groove machine in order to remove the Kelum and install it on the new wire. As the CL was manipulating it to move the swivel, the line, with approximately 2500 pounds of tension slipped back through the grip, and raised the wire and the employee up into the air. The CL then flipped and landed on his head.



Line-of-fire injuries can be very serious. There are many situations that expose us to potential line-of-fire risks. These types of injuries occur when an object makes contact with you or you make contact with an object.

This is not an M. J. Electric or Quanta Services Company Incident

Hazard recognition can prevent a serious injury or fatality; awareness is the first line of defense. Be alert and prepared - conditions may change where the line of fire zone exists. Understanding the job being done, the equipment you're working with, and being aware of your environment is absolutely critical to avoiding a serious injury.

We are all aware and reminded regularly of the dangerous risks many jobs pose here at ComEd. The question is, do you regularly reevaluate the environment and job task as you are performing the work? Do you use the Four Key Questions to identify and mitigate the hazards as changes in circumstances occur which may cause an injury to you or a co-worker?

There have been four injuries this Fall which resulted in employees being transported by ambulance to hospitals for treatment of work-related injuries. There are 10 weeks left in the year, and with winter approaching, now is the time to eliminate all distractions and complacency. We must remain focused, and continue to challenge ourselves and each other to stop and reevaluate the job if conditions change. Our ability to recognize hazards and change with the conditions may be what keeps us from sustaining a serious injury.



ComEd Safety Hotline: 630-576-SAFE (7233)
Outlook Email Address: ComEd Safety Communications
Email Externally: ComEdSafety@comed.com