

M. J. ELECTRIC, LLC

SAFETY ALERT

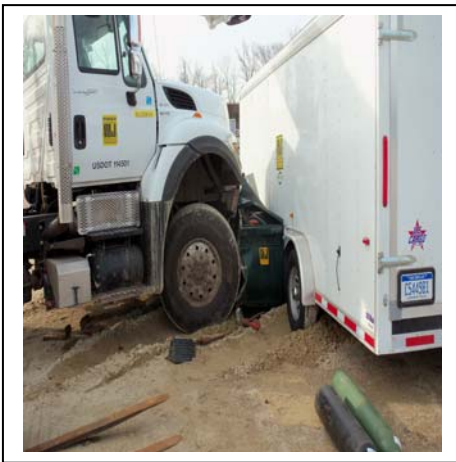
SECURING EQUIPMENT AND JOBSITES

In the past few years we have had an increase in theft and vandalism on our jobsites. There are important steps we can take to prevent property damage, environmental impacts, and system reliability issues. Most importantly, we need to protect the public as well.

To help deter and prevent theft and vandalism, at the end of your work day make sure every means available is taken to secure our show ups and all equipment left on the ROW. Over the weekends and holiday breaks extra precautions need to be taken. We cannot prevent all theft or vandalism, but we can reduce their frequency by doing our best to deter them.

Some examples on how to safe guard the show ups:

- ✓ Remove keys from equipment (install lock boxes on equipment or in show up trailers)
- ✓ Turn off master power switches on equipment
- ✓ Park equipment in front of Conex boxes (Conex locking devises are available to better secure Conex box doors)
- ✓ Contact local Police/Sherriff Departments to let them know we will be off site. Ask for extra patrols through yards while off for long periods of time
- ✓ Make sure job trailers are locked during the day and at night, radios are not visible, and computers are removed
- ✓ Close blinds on trailer windows
- ✓ Remove grounds from equipment and lock them in the bin door
- ✓ Lock bins on trucks
- ✓ Park trucks close enough so people can't open bin doors
- ✓ Mark MJE owned tools, direct shipped to job, with our company name and tool number.
- ✓ Install video surveillance signage around jobsites
- ✓ Use video surveillance or trail cams, depending upon job location



THIS IS WHAT CAN HAPPEN WHEN WE DO NOT TAKE THE TIME TO SECURE PROPERLY