



origin

# HSSE SERIOUS INCIDENT ALERT

## Safety -Excavating near buried Gas Pipeline

Incident date - 15 May 2014

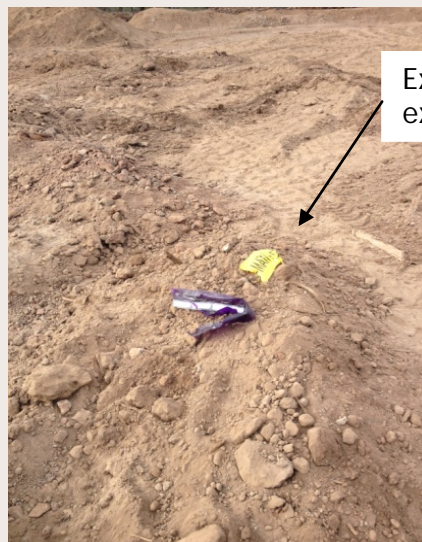
### What happened?

- While installing a flare pit liner a backhoe operator exposed service marker tape for a gas gathering HDPE pipeline.
- A spotter who was at the excavation, observed the exposed marker tape and immediately notified the operator to stop work.
- The exposed line was not live and had not yet been pressure tested.

### Preliminary Findings

*This incident is currently under investigation, however some of the preliminary findings are:*

- The information provided to the excavation crew suggested it was a Greenfield area with no underground services.
- There was no signage present indicating buried services in the immediate area



Exposed Marker Tape and excavation top view



### Next steps/Key Reminders

- Ensure all excavation activities are undertaken in accordance with the Origin Excavations Directive ORG-HSE-DVE-042 and relevant worksite transfer, excavation and PTW procedures.
- Always request the latest 'as-built' information for excavation work including 'Dial before you dig'.
- Ensure any landowner pipes not registered with dial before you dig are identified.
- Always use a spotter for excavation activities.
- Investigation is currently underway - results and key learnings will be shared when available.

*HSSE Notice to be disseminated and communicated to Origin personnel and contractor partners. Notice to be placed on HSSE noticeboards and shared at Toolbox Talks or Pre-Start meetings.*

**Audience -**

All APLNG

**Advice -**

For information and action

**More Information -**

Mark Fleming - Operations Superintendent FSG - 3033 1413